



97<sup>th</sup> Annual



# WCA & WCW Convention & Trade Show 2022

November 10-12  
Wenatchee Convention Center  
Wenatchee, Washington

[www.washingtoncattlemen.org](http://www.washingtoncattlemen.org)

#wcaconv22



**Tires LES SCHWAB**

**PROUD SUPPORTER OF THE  
WASHINGTON CATTLEMEN'S ASSOCIATION**

*We Believe*

**IN CHANGING  
MORE THAN  
JUST TIRES.**

Helping is something that runs deep within us. And it's something we've stood for since Les Schwab opened his doors in 1952. *Doing the Right Thing* isn't just a tagline. It's our promise to always put you and the community first.

# Table of Contents

Schedule of Events	2-6
Convention Center Map	7
WCA Social Media	8
Thank You Sponsors	10
WCW Agenda	11
Keynote Speakers	12
WCA District Map	13
Saturday Evening Entertainment Bio	15
Speaker Bios	16-23
WCA Leadership and Staff	24
WCW Executive Committee	25
Trade Show Exhibitors	27
WCA Allied Industry Members	29
WCA Choice Members	31
WCA & WCW Past Presidents	32-33
Photo Contest	35
Notes	36



## WCA Mission Statement

*Provide a unified voice for beef producers, promote innovative rangeland and livestock management, protect and preserve the cattle industry in the State of Washington.*

Cover & Program Designed by: Cheryl Brown, Stroke Above Design



# Schedule of Events

## Thursday, November 10th

Noon-5:30 PM	Registration Open	Red Lobby
Noon-4:00 PM	Trade Show Set-up	Red Lobby
Noon-4:00 PM	Washington Cattlemen's Association (WCA) Board Meeting	Blossom Harvest Room
5:00 – 9:00 PM	Allied Industry BBQ & Social	Off-site



Pybus Public Market  
3 N Worthen St.  
Wenatchee, WA 98801

Allied Industry BBQ & Social generously sponsored by Washington Cattle Feeders & WCA Allied Industry Members



## WCA Allied Industry Members

## Friday, November 11th

7:00 AM	Registration & Trade Show Open	Red Lobby
7:00 AM – 8:30 AM	Breakfast Buffet <i>(Sponsored by Whatcom County Cattlemen's Association)</i>	Orchard Exhibit Hall
7:00 AM – 9:00 AM	Beef Quality Assurance (with Breakfast) Producer Certification Training 1 by Emma Mulvaney, National Cattlemen's Beef Association <i>brought to you by the Beef Checkoff</i>	Orchard Exhibit Hall - North Bay



# Schedule of Events

## Friday, November 11th

8:00 AM - Noon

WCW Meetings

Golden Delicious Room

9:00 AM – 11:45 AM

WCA Policy Committee  
Meetings & Guest Speakers

Gala & Fuji Rooms

*(meetings to be staggered  
throughout this timeslot. Final  
schedule will be available at  
check in)*

### **Cattle Health & Wellness**

*Dr. Amber Itle, DVM & Team -  
WSDA State Veterinarian  
Dr. Fred Muller, DVM*

### **Marketing & Trade**

*Tanner Beymer, Senior Director of  
Government Affairs, NCBA  
Mark Streuli, Streuli Public Affairs &  
WCA Lobbyist*

### **Membership**

*Cheryl Brown, WCA Marketing &  
Media Consultant*

### **Resolutions**

*Branden Brink, WCA 1st VP*

### **Public Lands**

*Kaitlynn Glover, Exec Director -  
Public Lands Council*

### **Transportation & Natural Resources**

*Tom Dent, WA State Representative -  
13th District*

### **Water & Ecology**

*Karen Budd-Falen, Budd-Falen Law  
Offices  
Toni Meacham, Meacham Law Offices*

### **Wildlife, Endangered Species, Recreation**

*Shelley Short, WA State Senator -  
7th District  
Kim Thorburn,  
WDFW Commissioner*

The Zoetis logo, featuring the word "zoetis" in a lowercase, orange, sans-serif font.

**Coffee Bar during the  
convention is sponsored  
by Zoetis**

# Schedule of Events

## Friday, November 11th (continued)

9:00 AM – 5:30 PM

WCW Silent Auction

Red Lobby

Noon - 2:00 PM

Lunch & Keynote Speaker

Orchard Exhibit Hall

*Speaker: Building Relationships & Results, Danielle Kartes of Rustic, Joyful Food.  
Brought to you by the Beef Checkoff*

2:15 PM - 3:30 PM

Breakout Sessions

Gala & Fuji Rooms



**1. Beef Quality Assurance Training II**

- Emma Mulvaney, NCBA (*brought to you by the Beef Checkoff*)

**2. Improving End Use Quality and Tonnage in Hay by Focusing on Plant Health**

- Cat Salois, Director, Research & Technology, McGregor - (*1.5 WSDA credits avail*)

**3. Producer Q&A with the WSDA!**

- Dr. Amber Itle, WA State Veterinarian, WSDA



**4. “Risk Management Implications for Washington Cattle Producers in a Year of Unprecedented Volatility: Turning challenges to opportunities”**

- Dr. Shannon Neibergs, WSU- (*brought to you by Northwest Farm Credit Services*)

**5. Perfect Pairings: Beef & Beverage**

- Danielle Kartes, Rustic Joyful Food (*brought to you by the Beef Checkoff*)

3:30 PM -5:30 PM

Hosted Cocktails, Lobby Games

Red Lobby &

Fountain Lobby

and Trade Show Time! (*Open bar*

*compliments of Stokrose Angus & Bridgetal Media*)



***Please take this scheduled break to head on over to the trade show. Support our affiliated vendors and businesses who do so much to make our annual convention a success!***

# Schedule of Events

## Friday, November 11th (continued)

5:30 PM



Dinner & Endowment Trust Fund  
(ETF) Auction (*sponsored by Les Schwab*) **Drawing for Les Schwab tires will be held at dinner!**

Orchard Exhibit Hall

*WCA Hospitality Suite open after dinner and auction at Coast Center Hotel, Penthouse Suite*

## Saturday, November 12th

7:00 AM – Noon

Registration & Trade Show Open

Red Lobby

7:00 AM – 8:30 AM

Breakfast Buffet  
(*Sponsored by Bayer Animal Sciences*)



Orchard Exhibit Hall

8:00 AM

WCW Meetings

Golden Delicious Room

9:00 AM – 2:00 PM

WCW Silent Auction

Red Lobby

9:00 AM - 11:00 AM

Breakout Sessions

Gala & Fuji Rooms

**1. National Cattlemen's Beef Assoc (NCBA): Legislative update for Cattlemen** - Tanner Beymer, Senior Director of Government Affairs, NCBA & Dan McCarty Director, Industry & Affiliate Outreach

**2. "Advocating for Cattlemen"** - Sarah Falen- Budd-Falen Law Offices

**3. "Beyond Social Posts: More Ways to Market your Business Online"** - Q&A on modern marketing from 9-10am, followed by optional free one-on-one consultations. *Call or email Bridget to set up: 253-709-2870 - [bridget@bridgetcoon.com](mailto:bridget@bridgetcoon.com)*

**4. WA Beef Checkoff Q&A** - Patti Brumbach, Exec Director-WA State Beef Commission



# Schedule of Events

## Saturday, November 12th (continued)

11:30 AM - 1:30 PM

Lunch & Keynote Speaker - Sarah Falen/Budd-Falen Law Offices  
(Sponsored by Coastal Farm & Ranch)

Orchard Exhibit Hall



1:45 PM - 4:45 PM

WCA General Membership Meeting  
(hosted bar)

Fuji Rooms

*Cash bar starting at 4:30 pm before dinner in the Grand Apple Ballroom for Social Hour*

5:00 PM

Dinner  
WCW CattleWoman of the Year  
Entertainment: Cowboy Poet,  
Ron McDaniel  
(Sponsored by Merck)

Grand Apple Ballroom



***Thank you to all of our supporters, sponsors, committees, volunteers and families who helped make this convention possible!***

**MANUFACTURING  
LIVESTOCK FEED  
TUBS TO MEET  
YOUR EVERY NEED.**



**Give your District Sales Manager a call today!  
Jason Bean (509) 794-9059 | [jbean@vitalix.com](mailto:jbean@vitalix.com)**

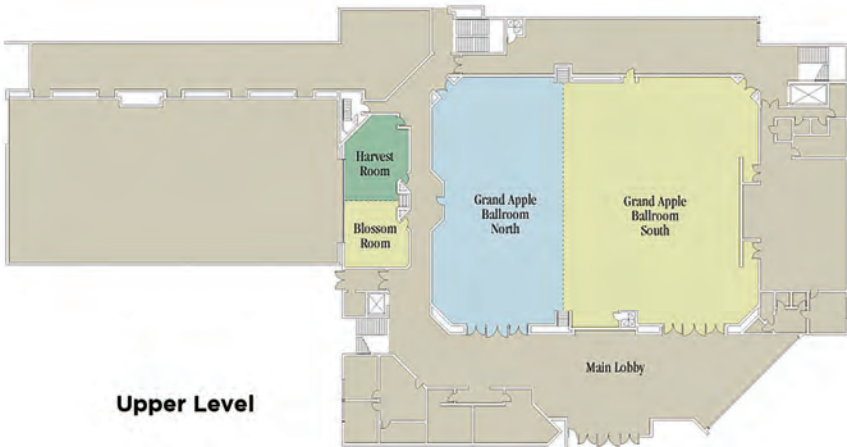
*Learn more about our Consumption Guarantee at [www.Vitalix.com](http://www.Vitalix.com).*

**Get the BLUE Tub®**





# Wenatchee Convention Center Map



Right outside of the Wenatchee Convention Center's doors lies Wenatchee's Historic Downtown featuring local shops, artistry, restaurants, tasting rooms, breweries and the accessible River Walk Crossing Bridge leading you directly to the beautiful Apple Capital Loop Trail and the highly popular Pybus Public Market.

*Be Sure To Follow the  
Washington Cattlemen's Association  
on Our Social Media Channels!*

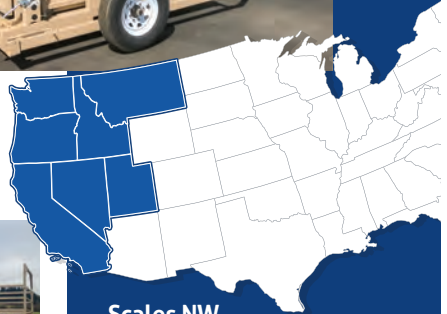


*Learn About  
Advertising With  
the WCA!!!*



# Specializing in Truck and Livestock Scales

Established in 1959, Scales NW offers a wide range of equipment, from precision lab balances to high capacity rail scales, as well as certified scale service and installation.



**Scales NW  
is proud to serve:**

California  
Idaho  
Montana  
Nevada  
Oregon  
Utah  
Washington

Contact Steve Orr for more information today!  
Email: [steveorr@scalesnw.com](mailto:steveorr@scalesnw.com)  
Phone: (503) 510-3540



[www.scalesnw.com](http://www.scalesnw.com) • (800) 451-0187

Thank You To Our Convention Sponsors



WCA Allied  
Industry Members



Yakima County  
Cattlemen



# Washington CattleWomen 2022 Annual Convention Meeting Agenda



## November 11, 2022

- 8:00 AM Call meeting to order
- Pledge of Allegiance/ANCW Creed
- Approve Agenda
- Acknowledge Guests and New Members
- Correspondence
- Review and Approve Minutes Nov 12, 2021
- Treasurer's Report: Present Bills
- Speaker: Sarah Falen, (approx. 8:30AM)
- Rules & Revisions - Review & Approve Bylaws Changes
- Committee Reports
- Break
- Speaker (approx. 10:00 AM)
- Committee Reports Continued
- Slate of Officer Introduction
- Speaker (Time 11:15 AM)
- Adjourn at 12:00 PM

## November 12, 2022

- 8:00 AM Call meeting to order
- Pledge of Allegiance/ANCW Creed
- Approve Agenda
- Acknowledge Guests and New Members
- Review and Approve Minutes Nov 13, 2021
- 2022 Budget Review and Approval
- 8:30 AM Training: Navigating This Upcoming Legislative Session - Pam Lewison
- Final Committee Reports
- Speaker: (approx. 9:30AM)
- Break
- Speaker: (approx. 10:15AM)
- Vote on Slate of Officers
- Installation of Officers Ceremony
- Reba Mazak – ANCW President
- Adjourn at 12:00 PM





## Keynote Speaker

### **Danielle Kartes - Rustic, Joyful Food**

[www.rusticjoyfulfood.com](http://www.rusticjoyfulfood.com)

*Friday, Noon - 2 PM - brought to you by the Beef Checkoff*



Danielle Kartes is an author, recipe maven, and speaker living near Seattle, Washington with her husband Michael, a photographer, and their two sweet boys. Together, the Karteses run their boutique food, lifestyle, and commercial photography business, Rustic Joyful Food. Rustic Joyful Food promotes loving your life right where you are, no matter where you are, and creating beautiful, delicious food that's fuss-free with whatever you have available to you. Danielle is driven by her love for Jesus, her family, and happy accidents in the kitchen. She has written and published four cookbooks, seven children's books, and one devotional memoir. Danielle appears often on national television and is the regular culinary contributor to The Kelly Clarkson Show.

---

## Keynote Speaker

### **Sarah Falen - Falen/Budd-Falen Law Offices**

[www.buddfalen.com](http://www.buddfalen.com)

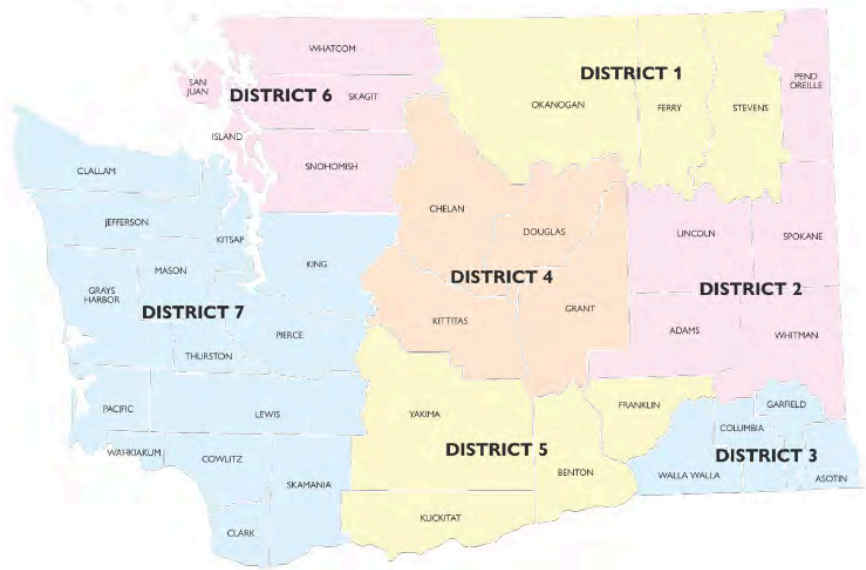
*Saturday, 11:30 AM - 1:30 PM - brought to you by Coastal Farm & Ranch*



Sarah Falen graduated from the University of Wyoming College of Law in May 2021 and joined Budd-Falen Law Offices. As a 6th generation Wyoming ranch kid with a passion for agriculture and the issues that impact it, Sarah found her voice for advocacy at the beginning of 2022. Sarah graduated from the University of Wyoming with a degree in Agriculture Communication and one degree in Environment and Natural Resources, and was the first student from the College of Agriculture to graduate with two degrees in a total of three years. Using all three of her degrees, Sarah advocates for agriculture by public speaking and sharing information regarding agriculture law on her social media platforms.



# WCA DISTRICT MAP



**ALL CONVENTION ATTENDEES WILL BE ENTERED TO WIN THIS THIS LARGE TACK BOX GENEROUSLY DONATED BY COASTAL FARM & RANCH.**

*DRAWING WILL TAKE PLACE DURING THE SATURDAY LUNCH & KEYNOTE SPEAKER PRESENTATION, SPONSORED BY COASTAL.*



GET THE MOST OUT OF YOUR SHOPPING EXPERIENCE AT COASTAL

# JOIN THE COUNTRY CLUB TODAY



- Earn Club Points on In-Store and Online purchases\*
- Get Reward Dollars (on account) that spend like cash
- Get Member-only Coupons
- Emailed Receipts Available
- Receipt-free Returns

\*some purchase exclusions apply, see website for details.



**OPEN 7 DAYS A WEEK**

HOURS: MON - SAT 8am - 8pm SUN 9am - 6pm

**Shop 24/7 at CoastalCountry.com**

Buy online, pickup curbside or ship to your door.



## Saturday Evening Entertainment

### **Cowboy Poet, Ron McDaniel**

*Saturday, 5 PM - brought to you by Merck Animal Health*

Ron and his wife Nancy live in NW Arkansas, where they have 4 grown kids, and 7 grandkids. They were also Foster parents, having fostered teenagers for five years. They have horses, dogs, and just enough cattle to be in constant debt to the bank.



Ron works in the Equine division for Merck Health Company and day works for area ranches. As a testament to his cowboying skills, the cowboss at Adams Cattle Company said “Hiring Ron was like losing two good men.” Ron and Nancy actively support their church, as well as the Remount Foundation a therapeutic facility that helps our men and women returning from combat, Agape Ranch Ministries for troubled teenage boys, as well as the CALL which is an organization in Arkansas dedicated to not only raising awareness about the need for families to take in foster children, but they also support and encourage the foster families involved. Ron is truly grateful to have made his living working in the Animal Health Industry. Reciting poetry has taken him all over America, from Florida to Alaska.

In 2015 he competed in the National Cowboy Poetry Rodeo (NCPR) and won the Humorous- Rising Star division. He went back to the NCPR and won the Humorous- Silver Buckle division and the Reciter Serious- Silver Buckle division. Ron is co-host of Better Horses Radio that airs weekly on 25 radio stations as well as Rural Radio Sirius XM. He enjoys anything that keeps him horseback, being with his family, and writing about himself in 3rd person.



## Guest Speaker

### **Dr. Amber Itle, DVM – WSDA State Veterinarian**



Amber Itle, a veterinarian with the Washington State Department of Agriculture since 2013, was named the new state veterinarian in March 2022. Itle first joined the department in 2013 as a field veterinarian and was appointed assistant state veterinarian in 2017, according to a news release from WSDA. Itle has worked to increase outreach from the state veterinarian's office, expanded the use of identification tags in the state's livestock industry, built infrastructure to support animal disease traceability across the state, developed guidance materials for responding to animal welfare cases and provided subject matter expertise on animal care issues during natural disasters. In her role, Itle manages the department's animal health, avian health and animal disease traceability programs, which are dedicated to protecting animal health and welfare, containing and eradicating animal disease and safeguarding public health by limiting exposure to zoonotic diseases. She is the current president of the U.S. Animal Health Association and the Western States Livestock Health Association. She also leads several animal health and welfare committees with the National Assembly of State Animal Health Officials, according to the release. Itle grew up on her family's fourth generation producer-handler dairy farm. She spent 10 years as a livestock, equine and sale yard veterinarian in the private sector before joining the Washington State Department of Agriculture. Itle holds a Bachelor of Science degree from Pennsylvania State University, a doctoral of veterinary medicine degree from the University of Pennsylvania and a master's degree in Animal Welfare from the University of British Columbia. Her hobbies include backpacking, skiing and mountain biking, and she is married and has three children.

---

## Guest Speaker

### **Dr. Fred Muller, DVM – Cattle Health & Wellness Update**



Founder and owner of Ag Health Labs, Dr. Muller is a practicing Veterinarian specializing in bovine health and milk quality with over 25 years of industry experience. DVM from Washington State University in 1997 and BS in Animal Science from Washington State University in 1993.



## Featured WCW Speaker

### Reba Mazak – ANCW President

Reba Y. Mazak is a fifth generation Florida cattle rancher. She grew up in Geneva, Florida and later moved to Sumter County, Florida where she resides today. She married her late husband, Paul Mazak, when she was eighteen year old. Together Paul and Reba started and grew their own cattle operation. It began with registered Polled Hereford cattle, and then grew to a cow/calf operation as they were able to purchase more ranch land. Mazak ranch owns cattle in both Florida and Texas and is a proud participant in Best Management Practice that is implemented on both ranches.



Making sure that the cattle business is looked at in a positive way is very important to this family as they have a deep heritage in agriculture and want it to continue. Reba also has a viable limerock mine and a wedding venue on her property in Central Florida and a hunting operation on her ranch in South Texas. Reba has been a part of the Florida CattleWomen, formerly Cowbelles for more than 40 years. She has held all offices at the state level and served as President in 2004, where she spoke to the Florida Senate Agriculture Nutrition and Forestry about the importance of the Beef Checkoff. Reba is very proud that she and her mom Imogene Yarborough were the first mother/daughter team to serve the Cowbelles/CattleWomen in Florida. Reba's passion for the cattle industry began at a young age and she has not wavered in her years of raising a family and setting goals for them. Paul was very vocal in the plans for their family, and his desire to continue no matter what the challenges, never knowing how true those words would be. It is with great pride that Reba serves the beef industry as she knows our future is in our hands. We must advocate for our commodity, protect our heritage and remember without our fore fathers insight to sustainability, we would not be here.

In Reba's spare time she enjoys spending time with her two daughters and their spouses. Rebecca and Grant Handley and Audra and Wes Platt, and her four grandsons Mayland , Myles, Warren and Waylon. Ranching, Hunting and promoting beef is where you will find Reba, they are are passions she readily shares with others and feels blessed to do so.





# Starts With Protecting Your Calves from Birth to Weaning

**ONE SHOT<sup>®</sup>**  
BVD

**INFORCE 3<sup>®</sup>**



## Calf protection for a healthy start

Vaccinate with ONE SHOT<sup>®</sup> BVD and INFORCE 3<sup>®</sup> for effective protection against respiratory disease

### INFORCE 3<sup>®</sup>

- Offers **single-nostril administration**
- Triggers **local and rapid** immune response<sup>3</sup>
- The **number one in doses sold** of respiratory vaccines on the market<sup>1</sup>

### ONE SHOT<sup>®</sup> BVD

- Helps **protect calves from the number one calf-killer** (*Mannheimia haemolytica*)<sup>2</sup> **combined with respiratory protection** (BVD Types 1 & 2)



Get comprehensive calf protection at [BuildingHealthyHerds.com](https://www.BuildingHealthyHerds.com)

NOTE: This vaccination program is appropriate for a calf nursing a cow on a modified-live vaccine reproductive program. If cows are receiving a killed virus reproductive vaccine, calves nursing at side should have a killed BVD vaccine at branding/turnout.

1. Animalyx Segment Data ending MAT May 2021, Respiratory Biologicals therapeutic category.  
2. Campbell J. Bacterial Pneumonia in Cattle. Merck Veterinary Manual. Published March 2015. Accessed on August 12, 2021.  
3. Ellis JA, Gow SP, Mahan S, Leyh R. Duration of immunity to experimental infection with bovine respiratory syncytial virus following intranasal vaccination of young passively immune calves. J Am Vet Med Assoc. 2013 Dec 1;243(11):1602-8. doi:10.2460/javma.243.11.1602.

All trademarks are the property of Zoetis Services LLC or a related company or a licensor unless otherwise noted.  
© 2021 Zoetis Services LLC. All rights reserved. INF-00162





## Breakout Session Speakers



**Cat Salois**  
Director Research  
& Technology  
McGregor



**Patti Brumbach**  
Executive Director  
WA State  
Beef Commission



**Dr. Shannon Neiberger**  
Director of Center for  
Risk Management,  
Professor and  
Extension Economist  
WSU



**Bridget Coon**  
Director of  
Digital Strategies  
WA State Beef  
Commission

## Guest NCBA Speakers



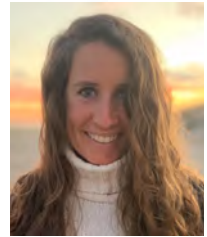
National Cattlemen's  
Beef Association



**Tanner Beymer**  
Senior Director of  
Government Affairs  
NCBA



**Dan McCarty**  
Director of Industry  
& Affiliate Outreach  
NCBA



**Emma Mulvaney**  
Associate Director  
of BQA Programs  
NCBA



**PROVIDING THE MOST COMPLETE AND EFFECTIVE  
CATTLE HEALTH PACKAGE IN THE NORTHWEST.**



*Livestock Solutions We Offer*  
HERD MANAGEMENT | VETERINARY | NUTRITION  
PREVENTION PROGRAM | LABORATORY TESTING | DATA

PRODUCTS & WHOLE HERD PROGRAM INFORMATION:

JON DAVIS | JON@CYONLS.NET | 209-964-0395

SARAH RYAN | SARAH@CYONLS.NET | 509-432-1300

VETERINARY SERVICES & TECHNICAL INFORMATION:

DR. FRED MULLER | FMULLER@AGHEALTHLABS.COM | 509-989-3696

## Guest Speaker

### **Toni Meacham – Water and Ecology Update**



Toni has lived in Connell her whole life, growing up on a cattle and horse ranch. She graduated from Connell High School and while in high school went to running start and earned her AA at the same time. She then continued her education at Washington State University where she earned her BA in Animal Science and met the love of her life, whom she later married.

She continued on to the University of Idaho and earned her J.D. Next, she packed up her belongings and moved back home where she opened her own practice. As well as practicing law, Toni is also a rancher, avid horsewoman, mother, wife, sister and daughter. Learn more about Toni at [www.tonimeacham.com](http://www.tonimeacham.com).

---

## Guest Speaker

### **Karen Budd-Falen – Water and Ecology Update**



Karen Budd-Falen has returned to the Budd-Falen Law Offices after her two-year appointment in the Trump Administration, Department of the Interior, as the Deputy Solicitor for Wildlife and Parks. As Deputy Solicitor, Karen was the lead attorney in revising the regulations implementing Endangered Species Act (ESA), including the regulations recognizing the rights of local governments to protect the economic stability and customs and cultures of their constituents. She was also heavily involved in drafting regulations giving landowners the rights of appeal of wetland maps on the National Wildlife Refuge System lands. Karen also served as Interior's representative on the task force that revised the regulations implementing the National Environmental Policy Act (NEPA). Karen's first stint in Washington D.C. was for three years in the Reagan Administration, U.S. Department of the Interior, as a Special Assistant to the Assistant Secretary for Land and Minerals Management. She later served as a law clerk to the Assistant Solicitor for Water and Power.

As an owner of Budd-Falen Law Offices, Karen has assisted local governments in asserting their rights of consistent review, cooperation and coordination in federal agency decisions; private property owners in protecting their Constitutionally guaranteed property rights, other multiple users in supporting grazing and multiple-use on federal/public lands; and exposing radical environmental groups' abuse of the legal system and the attorney fee-shifting statutes. Karen is an active volunteer and coach for Future Farmers of America ("FFA"). Karen grew up as a fifth generation rancher on a family-owned ranch in Big Piney, Wyoming. She received her undergraduate degrees and her law degree from the University of Wyoming. Karen and Frank have two children, Isaac (wife Reva Falen) and Sarah and grandson, Wesley.



## Guest Speaker

### Mark Streuli – Marketing & Trade



Mark Streuli is the Principal lobbyist in Streuli Public Affairs, a lobbying partnership that focuses on serving the interests of farmers and ranchers across the state. He's incredibly excited to represent and fight for the members of the Washington Cattlemen's Association. Mark has worked in Olympia for over 28 years in various capacities that have served agriculture, including:

- Over 18 years as staffer to the Washington State Senate, working on agriculture and transportation issues.
- Served under two different Directors of Agriculture that included appointments as the Legislative Director and the Agency Deputy Director.
- Served as the Associate Director of Government Relations for the Washington Farm Bureau, with a focus on livestock issues.

A graduate of Central Washington University, Mark was raised on a farm and always had a love of the political process and a passion for agriculture. He's been fortunate that his work has allowed him to bring those two together to support farmers and ranchers. Mark is married with two sons and a daughter. He's also a licensed auctioneer and can often be found at the local auction house, or raising funds for organizations across the Northwest.

---

## Guest Speaker

### Kaitlynn Glover, Public Lands Council - Public Lands Update



Kaitlynn Glover serves as the Executive Director of the Public Lands Council and the National Cattlemen's Beef Association Natural Resources. Prior to joining PLC in 2020, Kaitlynn served as a policy advisor on agriculture, natural resources, and Tribal policy issues in the United States Senate. Before moving to Washington, Kaitlynn spent several years working for Teagasc, the agriculture semi-state authority in Ireland. During that time, she received a Masters of Agriscience in Innovation Support from University College Dublin in Dublin, Ireland. Originally from

Wyoming, Kaitlynn has a diverse background in agriculture policy and production, and strong ties to grazers, recreationalists, and many other users of public land resources. She is an alumna of the University of Wyoming College of Agriculture where she studied agriculture communications, international agriculture economics, and farm and ranch management.

## Guest Speaker

### Tom Dent, WA State Rep, 13th Dist – Transportation & Natural Resources Update



Tom Dent has been a Columbia Basin resident for nearly 60 years. He became a professional pilot in 1976, and soon after founded Tom Dent Aviation, which offered aerial application, pilot service and flight instruction for area agriculture. Tom also owns the Flying T Ranch, where he lives 7 miles NE of Moses Lake, which raises buffalo, and produces and sells hay. Sworn into office in 2015, Tom represents the 13th District, which includes Lincoln and Kittitas counties, as well as parts of Grant and Yakima counties. He currently serves as the ranking member on the Children, Youth and Families Committee, the assistant ranking member on the Rural Development, Agriculture and Natural Resources Committee, and also serves on the Transportation and Rules committees. Tom also serves on several special legislative committees and caucuses.

His legislative priorities include preventing wildfires through improving the health of our forest and rangeland and initial attack on fire suppression, agriculture issues including the promotion of increased trade, protecting pesticide use and water resource management. Also, as a career aviation professional he prioritizes the protection and expansion of our aviation infrastructure and increased pilot and maintenance technician training. Learn more about Tom Dent at [www.tomdent.housepublicans.wa.gov](http://www.tomdent.housepublicans.wa.gov)

An advertisement for Pearson Farm & Fence. The background is a photograph of a farm with a large white Stay-Tuff fence. In the foreground, there is a green Arrowquip Q-Catch gate on the left and a black cow drinking from a bucket on the right. The cow has a SmartLig supplement tag in its ear. The text 'STAY-TUFF' is in a black banner at the top. 'ARROWQUIP' is written below a red double-arrow logo. 'SMARTLIG SUPPLEMENTS' is written above the cow. The address '4619 Stratford Rd NE, Moses Lake, WA 98837, 509-855-5508' is in the center. At the bottom, 'p.f.f. pearson farm & fence' is written in a stylized font.

**STAY-TUFF**

**ARROWQUIP**

**SMARTLIG**  
SUPPLEMENTS

4619 Stratford Rd NE  
Moses Lake, WA 98837  
509-855-5508

**p.f.f. pearson farm & fence**

## Guest Speaker

### **Shelly Short, WA State Senator, 13th Dist – Wildlife, Endangered Species, Recreation Update**



Short is a strong leader on energy, environment and regulatory issues and is a recognized local and national leader on climate change and cap-and-trade policy. In November 2018, she was elected by her peers to serve as the Republican Floor Leader in the Senate Republican Leadership. She serves as Ranking Member of the Senate Local Government Committee and sits on the Senate Agriculture, Water, Natural Resources & Parks, Environment, Energy & Technology and Rules Committees. She is also a member of the Joint Legislative Audit & Review Committee and Western Legislative Forestry Task Force, which are both separate from the Senate Committees. Shelly has been heavily involved in bringing her district's concerns about wolves to the state Legislature and is actively working to find solutions to the hardships that many of her citizens are experiencing. She's an avid advocate for rural Washington and was named the 2018 Legislator of the Year by the Hunters Heritage Council, Washington's largest hunting-rights organization. She was also awarded Legislator of the Year by the Washington Association of Agriculture Educators. She was a 4-H leader, has participated in the Colville Valley Gymkhana Club and enjoys skeet shooting, horseback riding, swimming and gardening. Shelly and her husband, Mitch, live in Addy. They have two adult children, Trevor and Brianna.

---

## Guest Speaker

### **Kim Thorburn, WDFW Commissioner – Wildlife, Endangered Species, Recreation Update**



Kim Thorburn was appointed to the Commission in March 2015. A retired public health physician, she is a life-long outdoors-woman. Commissioner Thorburn has devoted much time to wildlife conservation as a volunteer with agencies and nonprofit organizations. She has considerable experience with policy development, including a short stint as chair of the Washington State Board of Health. Commissioner Thorburn continues to pursue her interest in bioethics as a member of the Washington State University Institutional Review Board.

Commissioner Thorburn and her husband, Terry Allen, reside in Spokane and enjoy hiking, horseback riding, cross country skiing, bird watching, and wildlife photography.





## WCA Leadership & Staff



### Executive Committee

President	Jeff Keane
Past President	Don Blakemore
First Vice President	Branden Brink
Second Vice President	Matt Schneider
	Floyd Lewis
Secretary:	Linda Card

### District Representatives

District I	Jeff Dawson
District II	Jesse Ingels
District III	Jay Holzmilller
District IV	Russ Stingley
District V	Stephanie Martinez
District VI	Todd Macomber
District VII	Jason Lee

### Committee Chairs

Allied Industry	Jon Davis
Cattle Health & Wellness	Dr. Fred Muller DVM
Endowment Trust Fund	Clay Schuster
Marketing & Trade	Kevin Curnutt & Neil Kayser
Membership	Jesse Ingels
Nominations	Don Blakemore
Public Lands	Sam Ledgerwood & Vic Stokes
Resolutions	Branden Brink
Transportation & Natural Resources	Jim Hinton
Water & Ecology	Toni Meacham & Nancy Belsby
Wildlife, Endangered Species, Recreation	Jay Holzmilller

### Staff

Executive Vice President	Chelsea Hajny
Office Manager	Bev Criddlebaugh



Washington CattleWomen  
Executive Committee



Executive Committee

President	Kady Porterfield
President Elect	Kelby Tostenson
First Vice President	Brenda Hart
Second Vice President	Samantha Buhrig
Secretary	Gail Shelton
Treasurer	Bev Cridlebaugh
Parliamentarian	Jeannie Kiehn

Committee Chairs

Ag Day	Judy Ragland
Ag in the Classroom	Linda Henderson
Beef Ambassador Scholarship	Brittany Pearson
Beef Promotion	Brenda Hart
CattleWoman of the Year	Linda Weatherly
Communications	Gail Shelton
Courtesy	Charlotte Frye
Food/Safety/Health	Judy Ragland
Fundraising	Marty Stingley
Historian	Jeannie Kiehn
Legislative	Pam Lewison
Livestock Issues	Linda Weatherly
Membership	Barbara Weber
Memorial	Chris Clinesmith
Nominating	Linda Henderson
Region 5	Kady Porterfield
Revisions & Resolutions	Barb Weber
Social Media	Kelby Tostenson
WCW Liaison to the Beef Commission	Marty Stingley

***Thank you to all of the officers. We couldn't do it without ALL of our wonderful and hardworking volunteers!!!***





# Your trusted source.

We support agriculture and rural communities with reliable, consistent credit and financial services, today and tomorrow.

- Real Estate Financing
- Country Home & Lot Loans
- Operating Lines of Credit
- Crop and Livestock Insurance\*

800.743.2125 | [northwestfcs.com](http://northwestfcs.com)

 Equal Housing Lender

This institution is an equal opportunity provider and employer.

\*Serviced through Northwest Farm Credit Services Insurance Agency.

Here to Help You Grow<sup>®</sup>

## Tradeshow Exhibitors

**Alex's Shine Stand**

**Old Mill Country Store**

**Basin Feed & Supply**

**NRCS**

**Bayer Environmental Science**

**Pacific Intermountain Mortgage Co**

**Bobcat Angus**

**Pearson Fence**

**BlueLine Equipment**

**PNW Ag Sales**

**Boehringer Ingelheim**

**Powder River**

**Bridon USA**

**Save Family Farming**

**Bucking Palomino Boutique**

**Scales NW LLC**

**CattlActive**

**Simplot/Western Stockmen's**

**CKP Insurance**

**Sloan-Leavitt Insurance Agency**

**Cyon Livestock Solutions**

**Sparkling M Boutique**

**Elanco Animal Health**

**Sweetpro NW/Numzaan Safari**

**EPL Feed LLC**

**Teal Tuff Cattle Equipment**

**Gallagher USA**

**The VIP Agency Group LLC**

**Holloway Livestock**

**USDA/NASS**

**Idaho Livestock**

**Vitalix**

**Knipe Land Company**

**Washington State Beef Commission**

**Kokomoka's Boutique**

**Washington State DNR**

**Luft Trailer**

**Wilco Farm Stores**

**MultiMin**

**WSU Extension**

**Northwest Farm Credit Services**

**WSDA**

**Zoetis**





## LUFT TRAILER SALES IS A PROUD SUPPORTER OF THE WASHINGTON CATTLEMEN'S ASSOCIATION



Now featuring O.K. Corral by Titan West!  
An affordable corral system that you can take with you and set up literally anywhere!

**CARGO - UTILITY**

**FLATBEDS**

**SNOWMOBILE TRAILERS**

**HORSE TRAILERS**

**LIVING QUARTERS**

**DUMP TRAILERS**

**RV SUPPLIES**

**HITCH INSTALLATIONS**

**SALES**

**SERVICE & PARTS**



**Luft**  
TRAILER SALES

CONNECT WITH US!



View inventory at [www.lufttrailers.com](http://www.lufttrailers.com)

## THANK YOU to our **Allied Industry Members!**

**Andrea Xavier & Elizabeth Stewart**  
(360) 422-8922

**All West - Select Sires**  
Allen Bush - (800) 426-2697

**Allflex Livestock Intelligence**  
Kody Dee Williams - kodydeewilliams@allflexusa.com

**Alltech Inc**  
Tess White Snyder - (541) 429-1522

**American Angus Association**  
Jared Patterson - jpatterson@angus.org

**Boehringer Ingelheim**  
Courtney Anderson - courtney.anderson@boehringer-  
ingelheim.com

**CHS Animal Nutrition**  
Jena Ozenna - (541) 561-8177

**CHS Primeland**  
angila.rudy@chsinc.com

**CliftonLarsonAllen, CPA**  
Paul & Patricia Neiffer - farmcpa@outlook.com

**CYON**  
Jon Davis - jon@cyonls.net

**CYON**  
Sarah Ryan - sarah@cyonls.net

**Del Fox Custom Meats**  
Pat & Dawn Cairus - (360) 629-5184

**Ellensburg Cement Products**  
(509) 933-7050

**EPL Feed LLC**  
(360) 988-5811

**Gallagher USA**  
Liam Shaw - (425) 736-7074

**Highline Grain Growers Inc**  
(509) 745-8551

**JZK Livestock Services**  
Jessica Zimmerman King - (509) 881-1761

**Lewiston Livestock Market**  
madeline@lewistonlivestock.com

**Luft Trailer Sales**  
Tom Luft - (509) 962-5445

**Midstate Co-op**  
(509) 925-3525

**Multimin USA**  
Floyd Lewis - (509) 750-1474

**Noble Forest Company**  
Jason Spadaro - (541) 490-5013

**Northwest Farm Credit Services**  
Gretchen Uebelacker - (509) 764-2723

**Northwest Research & Nutrition LLC**  
Tim Bodine - tim@nwresearch.net

**Nutrien Ag Services**  
(509) 525-4920

**Pape Machinery**  
lhoover@papemachinery.com

**PerforMix Nutrition Systems**  
(208) 465-1724

**Puget Sound Energy**  
Hayden Harvey - hayden.harvey@pse.com

**Ritchie Industries**  
Robert Amundson - (641) 366-2525

**Schafer Livestock**  
Craig & Bonnie Schafer - (509) 750-1326

**SDS Lumber Co**  
Nate Putnam - (509) 493-6102

**Simplot Western Stockmen's**  
Turk Bates - (208) 477-3927

**Stockland Livestock Auction**  
(509) 535-2444

**SweetPro Northwest**  
Leo Baptiste - (208) 631-4904

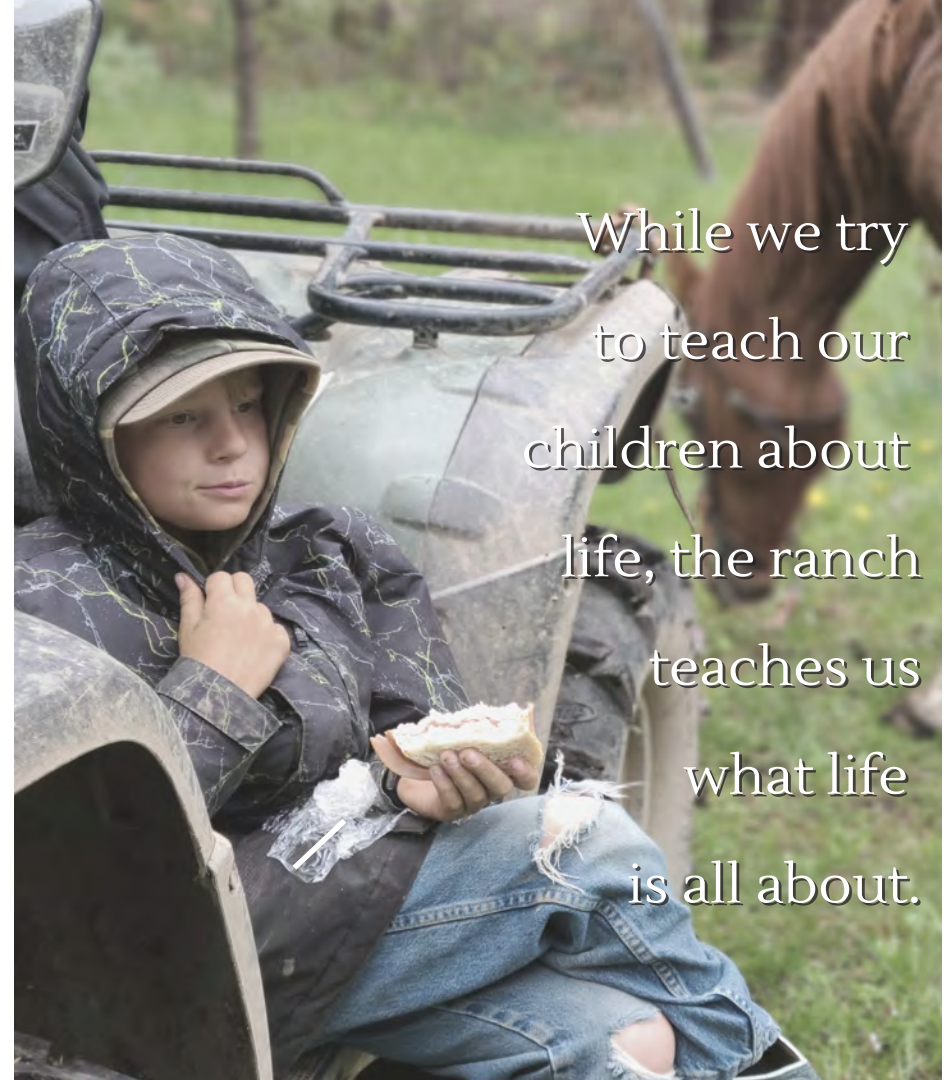
**Toppenish Livestock Commission**  
John Top - (509) 865-2820

**WA Animal Disease Diagnostic Lab**  
Dr. Tim Baszler - (509) 335-9696

**Wesselman Livestock LLC**  
Rodney Wesselman - (509) 750-2185

**Wraith, Scarlett & Randolph Ins Svcs Inc**  
(530) 662-9181





While we try  
to teach our  
children about  
life, the ranch  
teaches us  
what life  
is all about.



PACIFIC  
INTERMOUNTAIN  
MORTGAGE COMPANY

[www.pacificim.net](http://www.pacificim.net)

FARM & RANCH  
REAL ESTATE  
LOANS

(541) 523-4079



# THANK YOU to our *Choice Members!*

## **AgriSured Crop & Livestock Insurance**

Tom & Stacey Cobb - (509) 762-2622

## **Animal Health International**

Kevin Fennell - (509) 837-3590

## **Basin Feed & Supply - Kennewick**

(509) 737-8428

## **Beef Northwest Feeders**

(509) 787-3546

## **Chrysler Dodge Jeep Ram of Walla Walla**

Joel Olsen - (509) 529-9500

## **CKP Insurance**

Jack Field - (561) 353-5724

## **Everson Auction Market 1**

Terry DeBruin - (360) 966-3271

## **H3 Feeders**

Perry Martin - (541) 667-8991

## **Hell Roaring Irrigation**

Harry & Chris Miller - (509) 364-3427

## **Howard & Christine Kreps**

kreps@gorge.net

## **Kelleher Motor Company**

(509) 925-1911

## **Lazorik Financial Mgmt. LLC**

David Lazorik

## **Lee Frank's Mercantile**

David Kester - (509) 486-2105

## **Manterola Hay Inc.**

David Manterola

## **Merck Animal Health**

Silas Gilliam - (541) 561-5508

## **Mrs. Mitchi Hecomovich**

## **Old Mill Country Store**

(509) 925-5397

## **Powder River Livestock Equipment**

Pat Mallon - (801) 361-9655

## **Simcoe Insurance**

Kelsey Endicott - (866) 773-4525

## **Simplot Feeders**

Jon Haman - (509) 503-8068

## **Sloan-Leavitt Insurance Agency Inc.**

Paul Risenmay - (509) 488-9623

## **The McGregor Company**

(509) 397-4355

## **Washington Beef LLC**

(509) 865-2121

## **Washington Cattle Feeders Assn.**

(509) 929-1711



# WCA Past Presidents

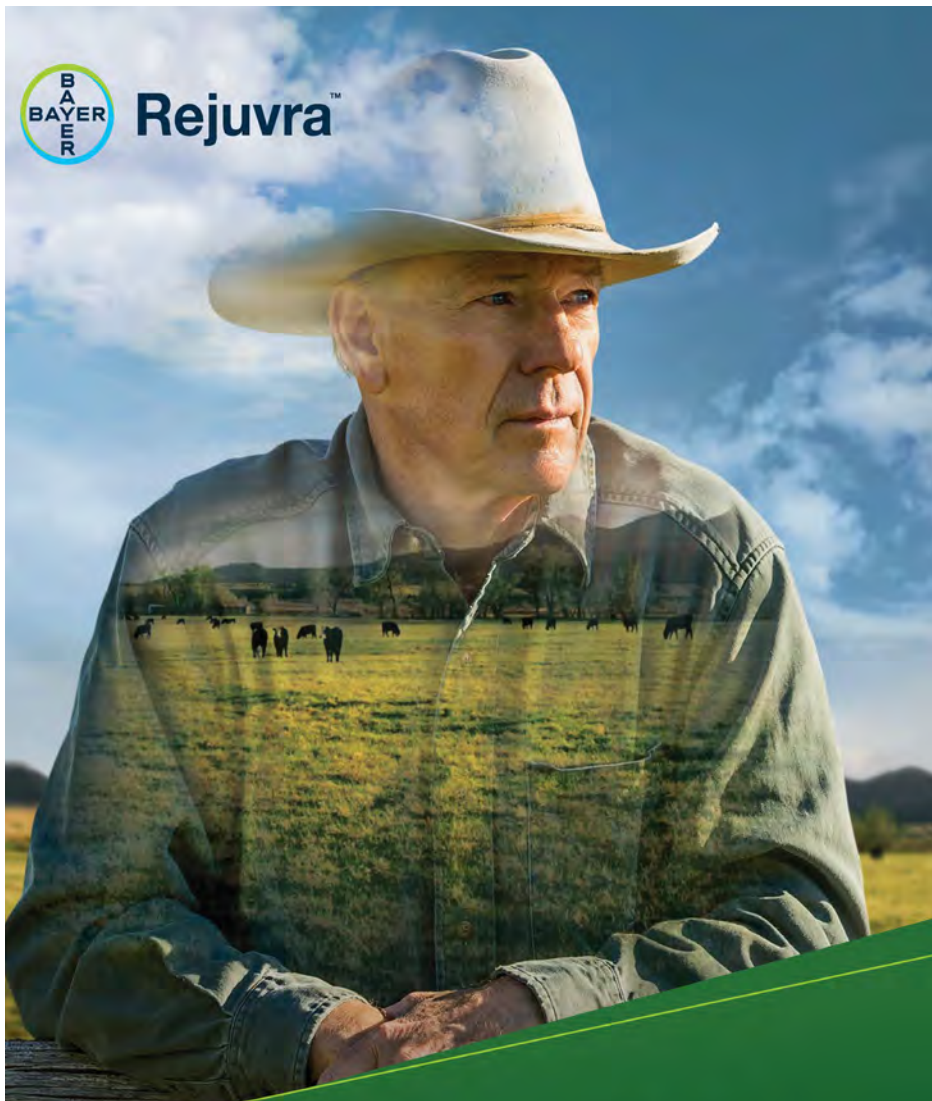
1926	Ed Banker	Curlew
1927	John Helphrey	Ferry
1930	R.L. Picken	Tonasket
1942	Rufus Schnebly	Ellensburg
1943-44	A.H. Hensel	Waterville
1945	Carl Grief	Uniontown-Idaho
1946	Ross Woodward	Loomis
1947-48	Alan Rogers	Ellensburg
1949	Walter Schrock	Okanogan-Oregon
1950-51	R. L. Rutter	Ellensburg
1952-53	Dale Ausman	Anatone
1954-55	Bill Fancher	Tonasket
1956-57	John McMinimee	Outlook
1958-59	Edward C. Francisco	Pomeroy
1960-61	Al M. Matsen	Bickleton
1962-63	A. Jay Agnew	Tenino-Centralia
1964-65	R. A. Hensel	Waterville
1966-67	Jack W. Tippett	Clarkston
1968-69	John Woodward	Loomis
1970-71	Larry Frazier	Ellensburg
1972-73	W. E. "Bill" Barnes	Tonasket
1974	R. J. McWhorter	Prosser
1976-77	Jick Fancher	Tonasket-Quincy
1978-79	Harold Cox	Pasco
1980-81	Art Schuster	Goldendale
1982-83	Don McClure	Nespelem
1984-85	Nelson Cordill, Sr.	Cheney
1986	Dick Coon	Washtucna
1987	Jack Davenport	Goldendale
1987-88	B. A. "Buzz" Strickland	Burlington
1989-90	Steve Hailey	Mesa
1991-92	John Krogh	Newport
1993-94	Ken Davis	Walla Walla
1995-96	Bruce Cameron	Centerville
1997-98	Mary Burke	Cle Elum
1999-2000	Rick Nelson	Tenino
2001-02	Neil Kayser	Centerville
2003-04	Sid Viebrock	Waterville
2005-06	Pete Guglielmino	Kettle Falls
2007-08	Jim Sizemore	Centerville
2009-10	Dick Coon, Jr.	Benge
2011-12	Larry Olberding Jr.	Connell
2013-14	Vic Stokes	Twisp
2015-16	Bill Sieverkropp	Ephrata
2017-18	Tyler Cox	Walla Walla
2019-20	Sam Ledgerwood	Clarkston
2021	Don Blakemore	Touchet

# WCW Past Presidents

1952-53	Gertrude Bloomfield	Pullman
1954-55	Floretta Kinchelo	Loomis
1956-57	Mary McMinimee	Outlook
1958-59	Florence Harting	Dayton
1959-61	Vanira Gimlin	Waterville
1962	Vesta Sackman	Omak
1963-64	Marie Kreps	White Salmon
1965-66	Hazel Krouse	Dayton
1967	Elsie Frazier	Ellensburg
1968-69	Sarah McBride	Bickleton
1970-71	Bea Gies	Moses Lake
1972	Peggy Deering	Tacoma
1973	Rose Harris	Waitsburg
1974-75	Stephanie Coon	Washtucna
1976	Ardis Dashiell	Fairfield
1977	Eileen Getz	LaCrosse
1978	Christine Marsh	Cheney
1979	Fern Meritt	Toppenish
1980	Marie Buxton	Moses Lake
1981	Peggy Dorsey	Prescott
1982	Margaret Kaplan	Spangle
1983	Audrey Inlow	Tonasket
1984-85	Karen Rubenser	Starbuck
1986	Marguerite Kayser	Centerville
1987	Mariane Saunders	Moses Lake
1988	Dolores Scholz	Tonasket
1989	Barbara Elkington	Ellensburg
1990-91	Jean Berney	Okanogan
1992	Mary DeBeaumont	Moses Lake
1993	Kathy Carstens	Greenacres
1994	Eleanor Kiner	Almira
1995	Violet Utt	Riverside
1996	Patti Goodwin	Hartline
1997	Gaynel Gering	Ritzville
1998-99	Jane Lee	Goldendale
2000	Chloe Weidenbach	Ellensburg
2001	Rita Heinlen	Okanogan
2002-03	Chris Clinesmith	Benge
2004-08	Jane Lee	Goldendale
2009-10	Teddy Weekes-Charlton	Ellensburg
2011	Linda Serosky	Royal City
2012-13	Jeannie Kiehn	Quincy
2014-15	Marty Stingley	Ellensburg
2016-17	Linda Henderson	Ellensburg
2018-	Kady Porterfield	Ellensburg



# Rejuvra™



*It's how the west will be won again.*

The promise of the American west has always been found in the land and its stewards. New Rejuvra™ herbicide gives today's ranchers the power to deliver on that promise. One application controls invasive annual grasses and keeps working for up to four years. Fewer invasive annual grasses allow for increased quality and quantity of forage, so cattle feed costs are reduced. Don't settle for short-term solutions. Restore the rangeland to its original beauty and productivity with help from Rejuvra.

**Discover more at [www.rejuvra.com](http://www.rejuvra.com)**

ALWAYS READ AND FOLLOW LABEL INSTRUCTIONS Bayer Environmental Science, a Division of Bayer CropScience LP, 5000 CentreGreen Way, Suite 400, Cary, NC 27513. For additional product information, call toll-free 1-800-531-2687. Not all products are registered in all states. Bayer, the Bayer Cross and Rejuvra are trademarks of Bayer. © 2020 Bayer CropScience LP.





# PHOTO CONTEST



Do you want to win a **FREE** full page ad?



Do you want to see your photos featured on the cover of the Ketch Pen, on the WCA website and our social media pages? Send in your best photos from the ranch for a chance to win a **FREE** full page ad!



Please send all entries to [dillon@wacattle.org](mailto:dillon@wacattle.org).

There is no limit to the number of entries each individual can submit. By entering your photos, you authorize Washington Cattlemen's Association to publish your photos in print and online. The winner will be announced in the December issue of 2022 and the free full page ad will be good for any issue of 2023. You must be a WCA member to enter.





# S. STOKROSE

WARDEN, WA | FARM & ANGUS RANCH

**DATA DRIVEN. PERFORMANCE PROVEN.**

*Bull Sale 1st Thursday of November*



*Aaron Golladay*  
509-750-9821    AARON@STOKROSE.COM

STOKROSE.COM

MARKETING BY BRIDGETAL MEDIA  
BRIDGETALMEDIA.COM



BRIDGETAL  
MEDIA  
Digital Services

# Protect Your PRF and LRP

(Pasture, Rangeland, Forage & Livestock Risk Protection)



CONTACT  
**Jack Field**  
**509-929-1711**  
jfield@ckpinsurance.com



- **Affordable**
- **Backed by the USDA**
- **Protects your cash flow**
- **No claim forms for PRF**
- **Quick & easy claim payments**
- **No adjusters required**

## Let CKP Help You Protect Your PRF & LRP so you:

- Protect your land and livelihood against potential losses due to lack of rainfall
- Make the most informed decision for your business
- Never purchase unnecessary coverage and pay more than you need

## Reduce risk and protect your operation from the unpredictable markets with Livestock Risk Protection (LRP)!

LRP can be used as a useful tool to securing lending for your operation! It provides year-round coverage on a per-head basis and a guaranteed price with no bid/ask spread.



Expertise in Pasture, Rangeland & Forage

PART OF THE BROWN & BROWN TEAM

**877-CKP-INS1 (877-257-4671)**

**ckpinsurance.com**

*When buying business insurance, it's okay to have a generalist agent. When buying PRF insurance, it's SMART to have a SPECIALIST.*